

Organizational Profile

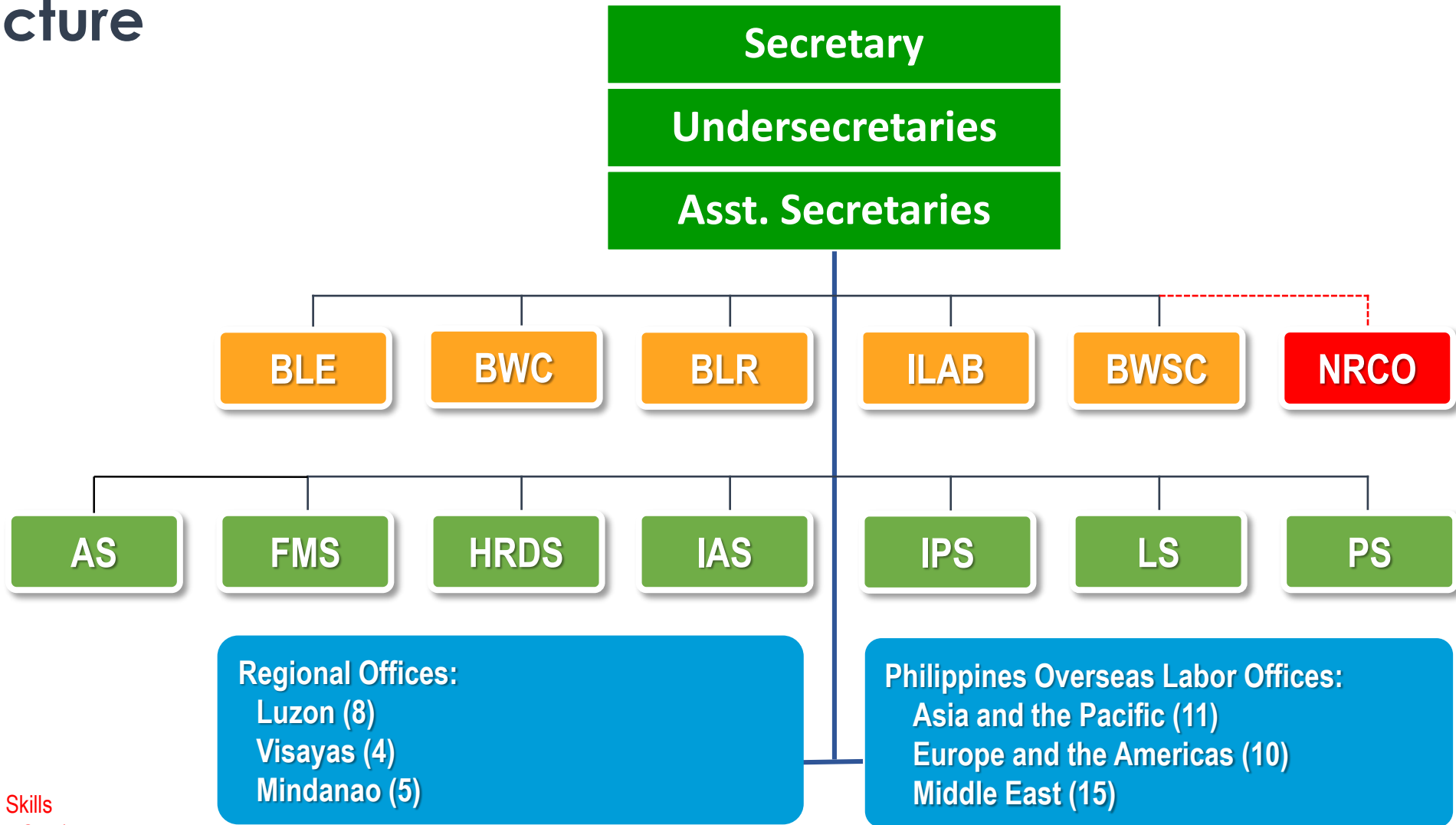
DOLE Structure

ATTACHED AGENCIES

1. Institute for Labor Studies
2. National Conciliation and Mediation Board
3. National Labor Relations Commission
4. National Maritime Polytechnic
5. National Wages and Productivity Commission
6. Overseas Workers Welfare Administration
7. Philippine Overseas Employment Administration
8. Professional Regulation Commission
9. Employees' Compensation Commission
10. Occupational Safety and Health Center

Technical Education and Skills Development Authority (TESDA)

* By virtue of Executive Order No. 1 (s.2016), the TESDA is transferred under the supervision of the Office of the Cabinet Secretary.



Bureau
 OSEC Service Unit

NRCO is transferred as an attached office of OWWA thru Republic Act 10801 (s.2016).