



as of 31 December 2013

Submitted by:

ATTY. ROMEO M. MONTEFALCO, JR.

**OIC-Director IV
Legal Service**



ADMINISTRATIVE CASE, CIVIL AND CRIMINAL



TOTAL CASES FILED AGAINST DOLE PERSONNEL AS OF DECEMBER 31, 2013 (4th QUARTER OF 2013)

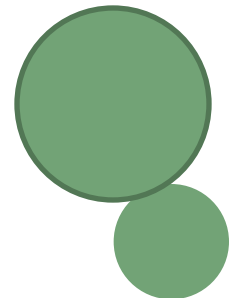
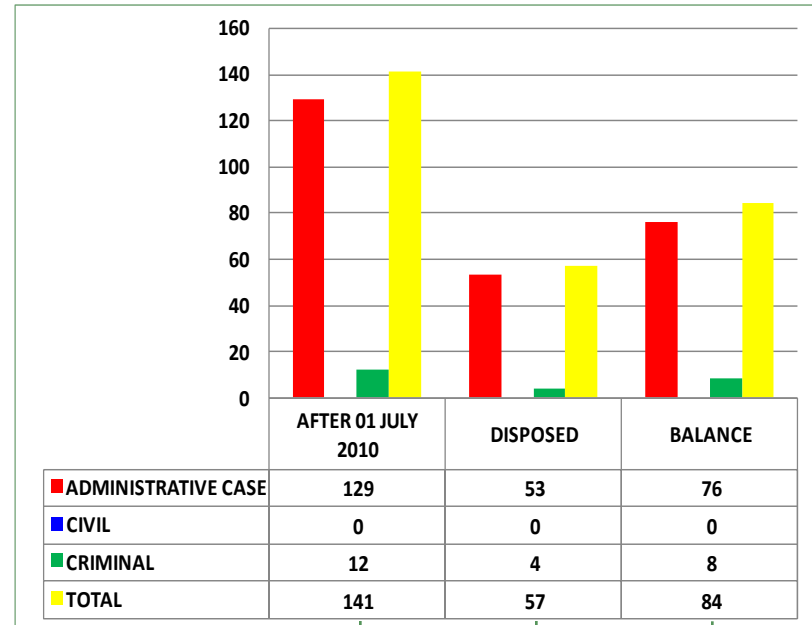
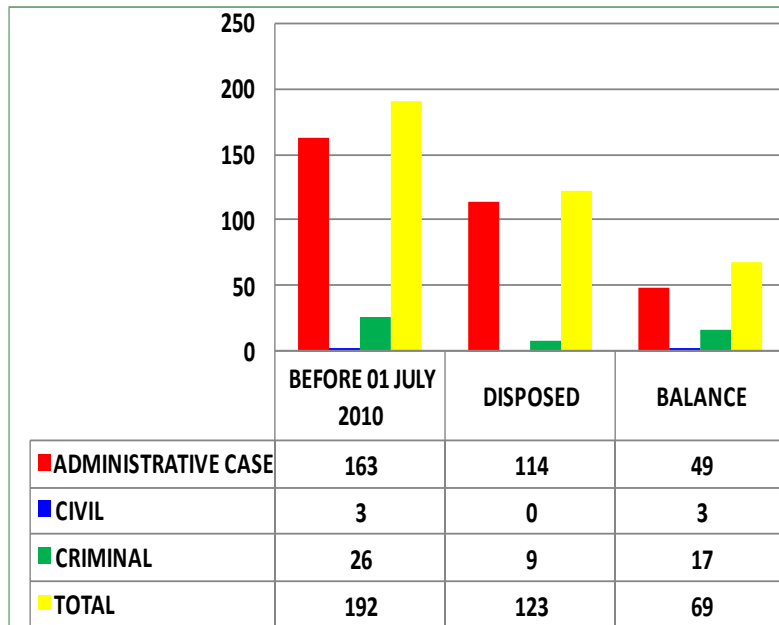
Table 1.1

	Cases Received before 01 July 2010		Cases Received After 01 July 2010		Total
Total Cases as of 31 December 2012		163		113	276
Add: cases reported on the 1 st to 4th Quarter of 2013		29		28	57
Total Cases as of 4 th Quarter of 2013		192		141	333
Less: <i>Resolved/Disposed</i>		123		57	180
Efficiency related	32		19		
Integrity related	85		35		
Integrity-Graft related	6		3		
Total Cases Pending		69		84	153
Efficiency related	16		21		
Integrity related	50		58		
Integrity-Graft related	3		5		



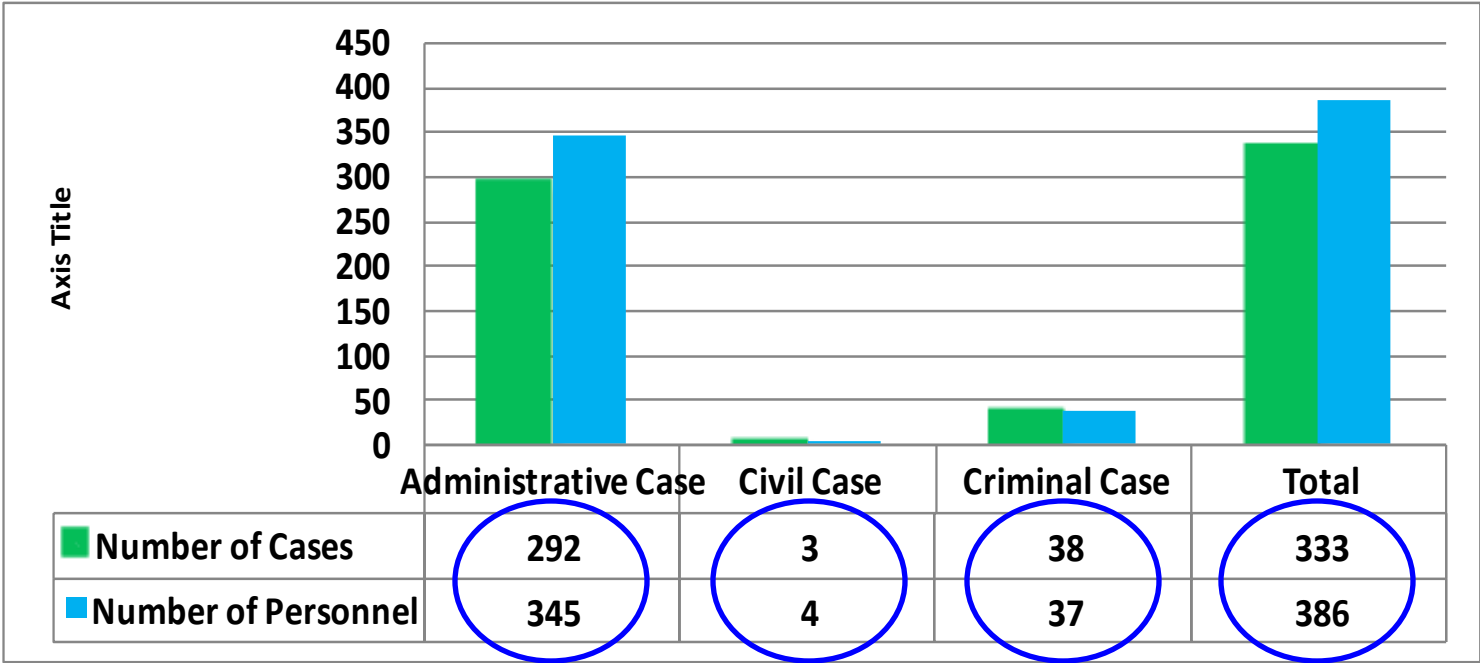
GROUPING OF PENDING CASES

Graph 1.1



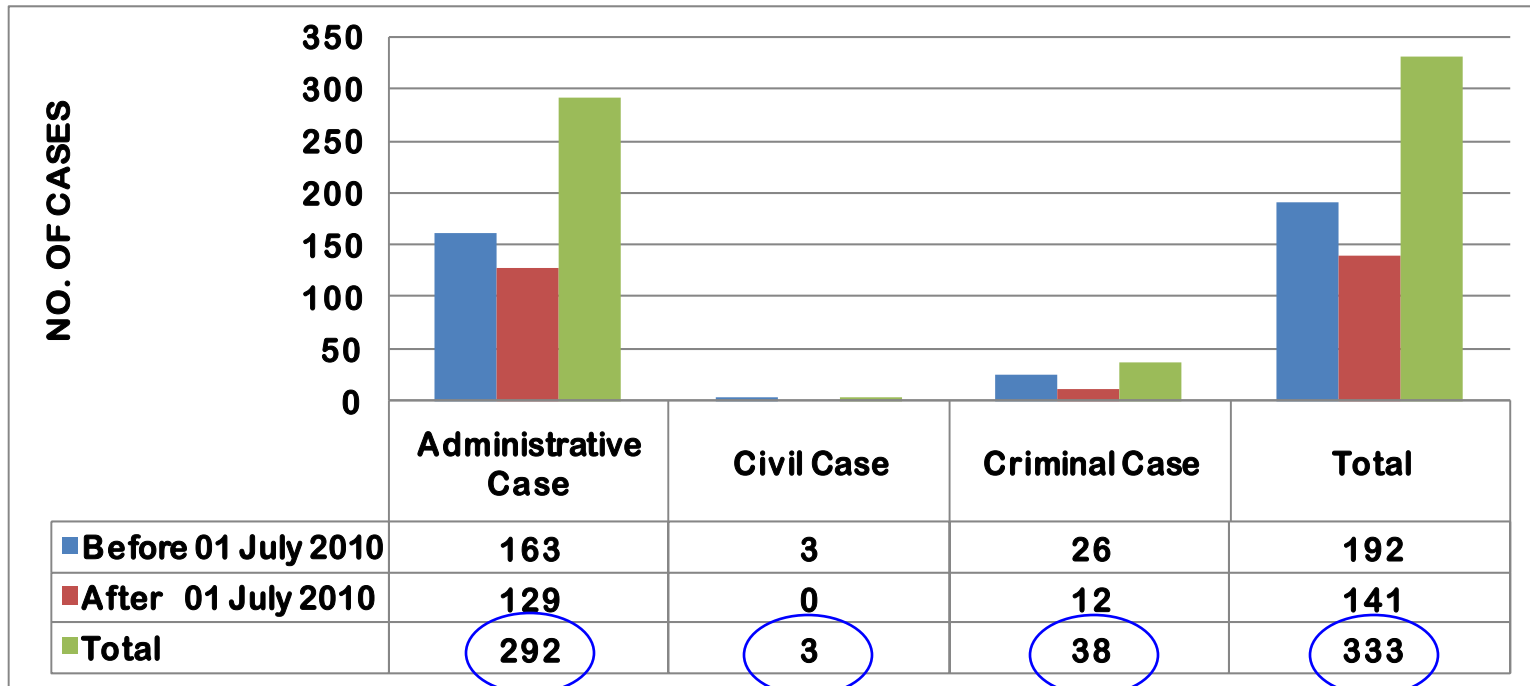
TOTAL CASES

Graph 1.2



GROUPING OF CASES ACCORDING TO DATE OF FILING

Graph 1.3



OFFICE/AGENCY	NO.OF CASES
CENTRAL OFFICE	22
AS AND IAS	2
BWC	5
HRDS	1
ILAB-POLO	12
ILS	1
LCO	1
REGIONAL OFFICES	69
ARMM	1
NCR	17
RO1	4
RO2	1
RO3	6
RO4-A	9
RO4-B	4
RO5	1
RO6	8
RO7	7
RO8	1
RO11	6
RO12	4
ATTACHED AGENCIES	242
ECC	2
NCMB	8
NLRC	97
NMP	5
NWPC	2
OSHC	1
OWWA	4
OWWA-POLO	6
POEA	24
PRC	58
TESDA	35
TOTAL	333

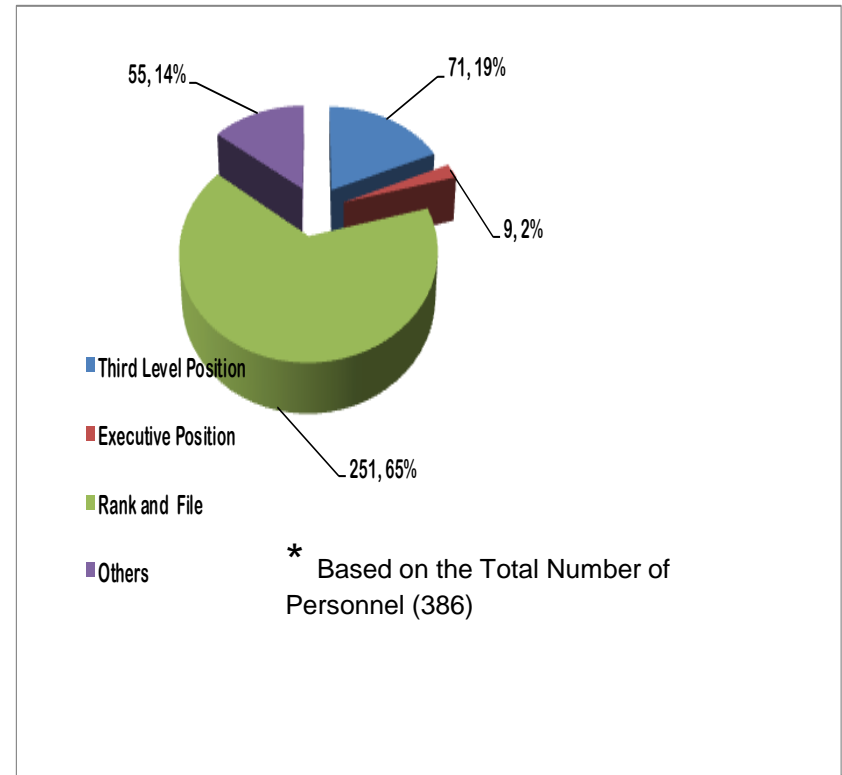
**DOLE OFFICES WITH
CASES**
Table 1.2



CLASSIFICATION OF PERSONNEL WITH CASES ACCORDING TO POSITIONS

Table 1.3 and Graph 1.4

Breakdown of Active Personnel with Cases	Total
1. Third Level Position	71
2. Executive Positions (Non-Presidential Appointees Occupying Director Positions)	9
3. Rank-and-File	251
4. Others (Dismissed, Project Base or Contractual, Retired, Resigned, Deceased, and Dropped from service)	55
Total Number of Personnel	386



Office/Agency	No. of Personnel
Central Office	30
Regional Offices	80
DOLE-NCR	21
DOLE-RO1	3
DOLE-RO2	2
DOLE-RO3	8
DOLE-RO4A	6
DOLE-RO4-B	4
DOLE-RO5	1
DOLE-RO6	13
DOLE-RO7	5
DOLE-RO8	1
DOLE-RO11	7
DOLE-RO12	8
ARMM	1
Attached Agencies	276
ECC	2
NCMB	6
NLRC	92
NMP	8
NWPC	2
OSHC	1
OWWA	14
POEA	32
PRC	68
TESDA	51
TOTAL	386

**NUMBER OF PERSONNEL
WITH CASE PER OFFICE**
Table 1.4



Included in the 386 total are:	
Dismissed Personnel	6
BWC	1
NLRC	4
POEA	1
Project Based/Contractual Employee	14
OWWA	5
POEA	1
PRC	8
Retired Personnel	23
BWC	1
ILAB-POLO	2
NCMB	1
NLRC	4
NMP	3
OWWA	1
NCR	1
RO3	1
ROIV-A	1
RO5	1
TESDA	7
Resigned Personnel	9
NCR	1
NLRC	1
POEA	2
PRC	1
RO1	1
RO4-A	1
TESDA	2
Deceased Personnel	3
BWC	1
RO6	1
TESDA	1
TOTAL	55

**EMPLOYEES WITH CASES
WHO ARE NO LONGER
CONNECTED WITH THE
DEPARTMENT**

Table 1.5



CLASSIFICATION OF CASES

Table 1.6

Efficiency	Integrity	Integrity-Graft Related	Total
88	228	17	333



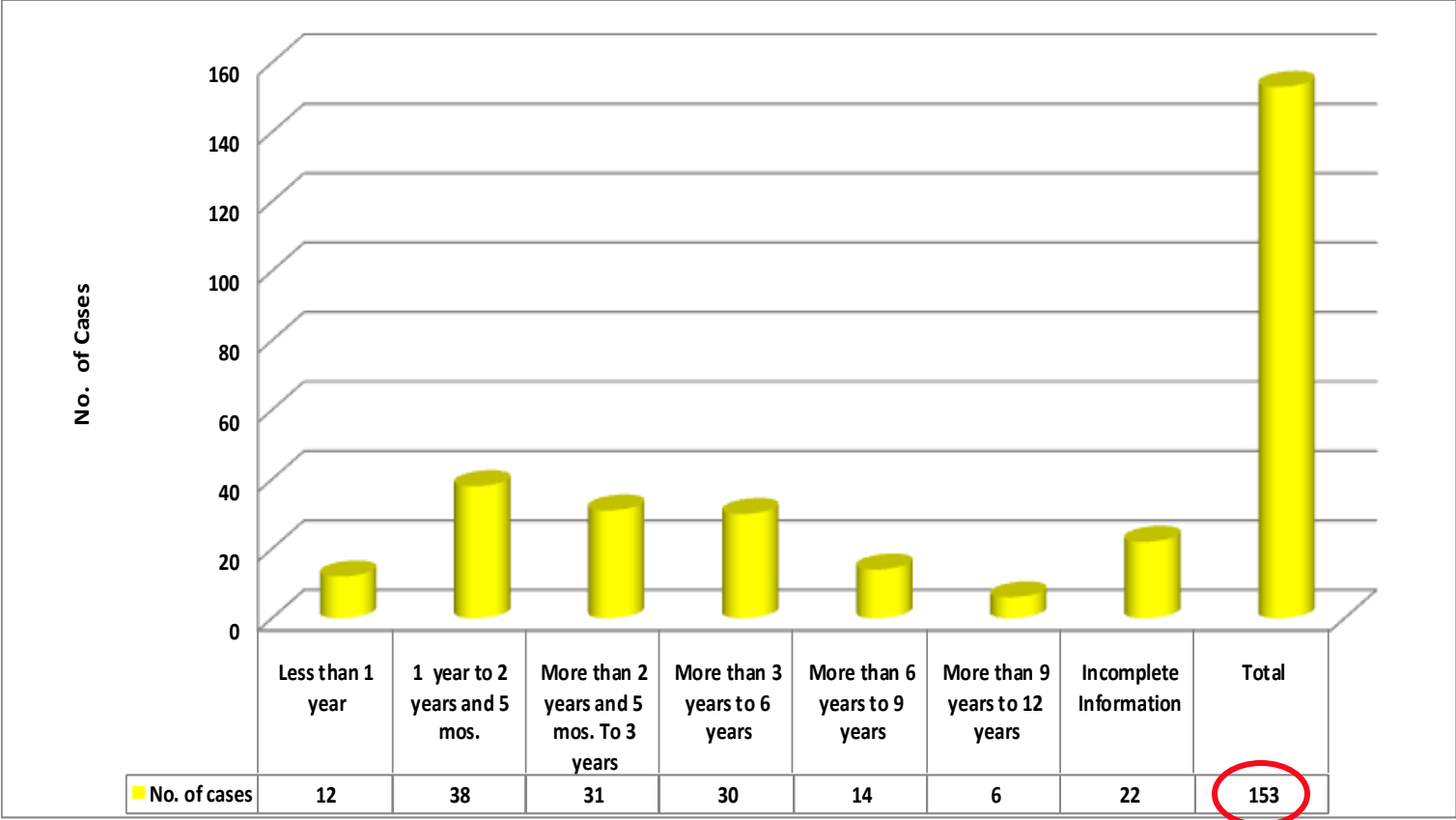
Office/Administrative Body	No. of Cases	
A. Legal Service	<u>54</u>	54
B. Office/Agency Level		
Regional - NCR	8	
Regional - RO3	1	
Regional - RO11	<u>1</u>	10
Attached - ECC	1	
Attached - NLRC	58	
Attached - NMP	1	
Attached-NWPC	1	
Attached - POEA	7	
Attached - TESDA	15	
Attached - PRC	<u>55</u>	138
C. Other Administrative Bodies		
Filed thru Civil Service Commission	25	
Filed thru Supreme Court	5	
Filed thru Court of Appeals	8	
Filed thru Department of Justice	1	
Filed thru Metropolitan Trial Court	4	
Filed thru Regional Trial Court	6	
Filed thru Sandiganbayan	3	
Filed thru Office of the President	8	
Filed thru Office of the Ombudsman	<u>71</u>	<u>131</u>
TOTAL		<u>333</u>

**ADMINISTRATIVE
BODIES AND OTHER
FORA (LODGING OF
CASES)**
Table 1.7



AGEING OF PENDING CASES

Graph 1.5



	PENDING BEFORE JULY 2010		PENDING AFTER JULY 2010	
Less than 1 year				
Filed thru LS			2	
Filed thru NLRC			4	
Filed thru PRC			5	
Filed thru OMB			<u>1</u>	12
More than 1 year to 2 years and 5 mos.				
Filed thru CA			1	
Filed thru OMB			5	
Filed thru OP			1	
Filed thru LS			1	
Filed thru NCR			1	
Filed thru NLRC			8	
Filed thru POEA			5	
Filed thru PRC			12	
Filed thru ECC			1	
Filed thru TESDA			3	<u>38</u>
More than 2 years and 5 mos. to 3 years				
Filed thru CSC	1			
Filed thru MTC	1			
Filed thru OMB	5			
Filed thru LS	6			
Filed thru NLRC	4			
Filed thru PRC	11			
Filed thru TESDA	3	31		

**AGEING OF
PENDING CASES
BEFORE
DIFFERENT
ADMINISTRATIVE
BODIES AND
OTHER FORA**
Table 1.8



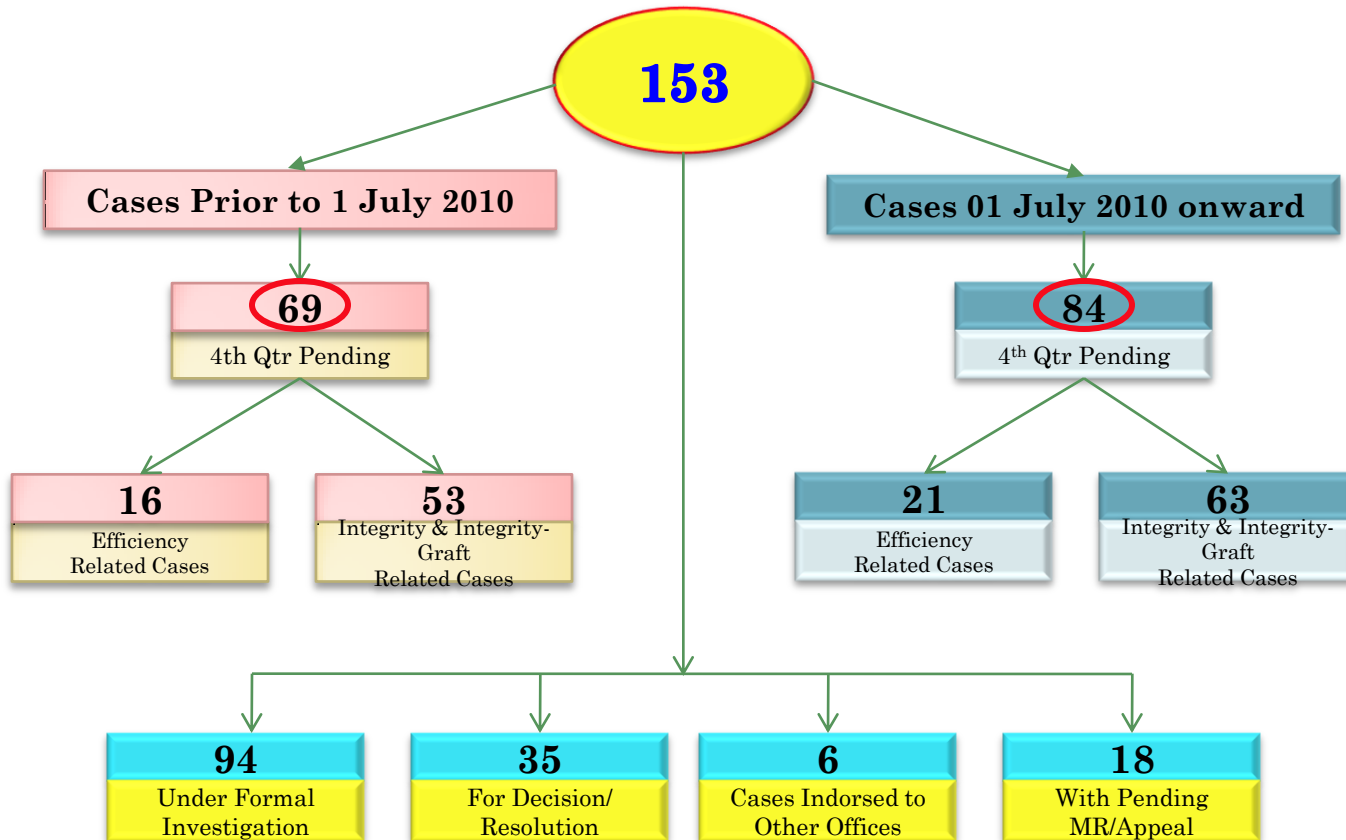
More than 3 years to 6 years				
Filed thru CA	2			
Filed thru RTC	4			
Filed thru LS	6			
Filed thru NLRC	3			
Filed thru OMB	2			
Filed thru PRC	9			
Filed thru NCR	1			
Filed thru TESDA	2			
Filed thru SC	<u>1</u>	30		
More than 6 years to 9 years				
Filed thru CSC	2			
Filed thru LS	5			
Filed thru MTC	1			
Filed thru PRC	2			
Filed thru RO3	1			
Filed thru NLRC	1			
Filed thru OMB	<u>2</u>	14		
More than 9 years to 12 years				
Filed thru MTC	2			
Filed thru NCR	1			
Filed thru CA	1			
Filed thru OMB	1			
Filed thru SB	<u>1</u>	6		
Incomplete information (no filing date)				
Filed-Thru SC	3			
Filed-Thru OMB	14			
Filed-Thru RTC	1			
Filed-Thru LS	2			
Filed-Thru OP	1			
Filed-Thru NLRC	<u>1</u>	22		
		103		50
TOTAL			153	

**AGEING OF CASES
BEFORE
DIFFERENT
ADMINISTRATIVE
BODIES AND
OTHER FORA**
Continuation from
table 1.8.....
Table 1.8a



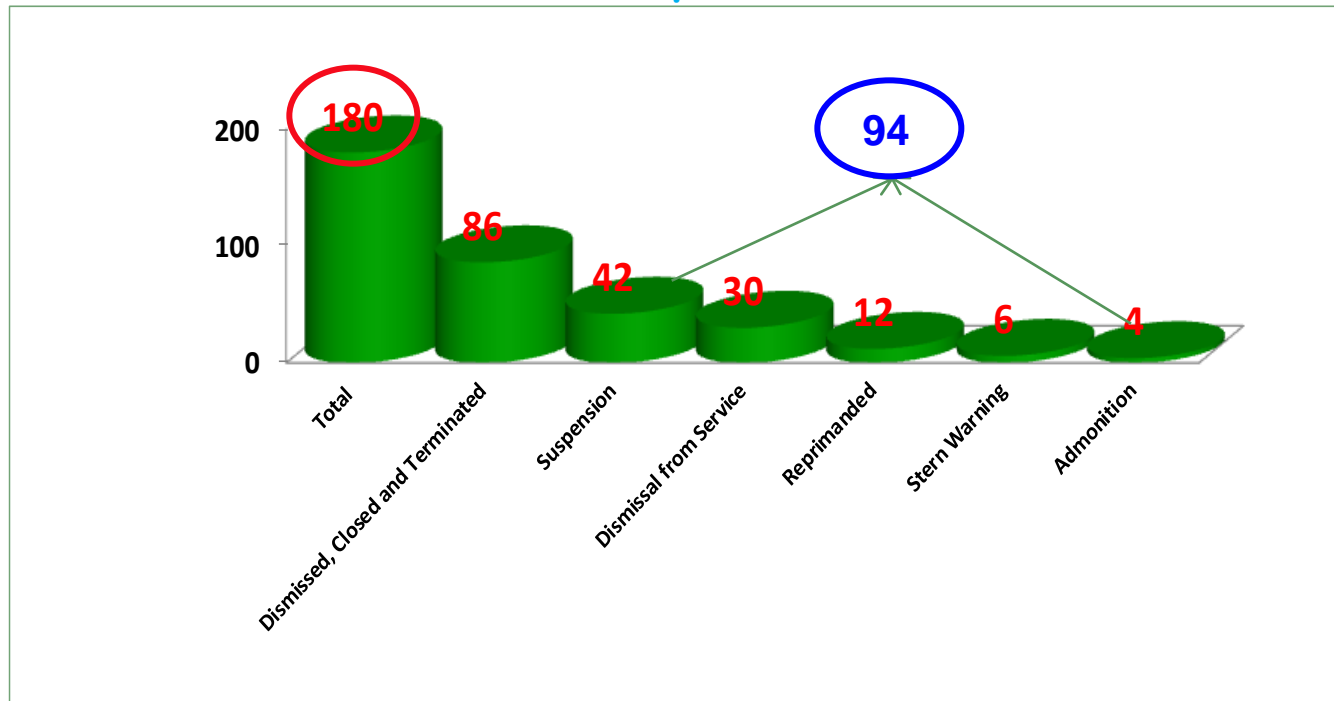
STATUS OF PENDING CASES

Graph 1.6



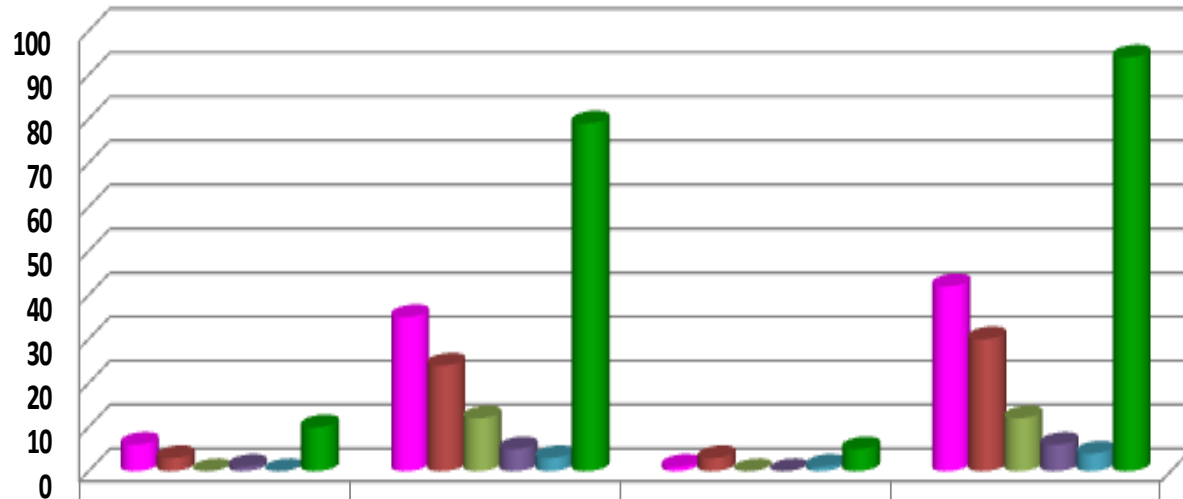
RESOLVED/DISPOSED CASES ACCORDING TO PENALTY IMPOSED AND TERMINATION OF PROCEEDINGS

Graph 1.7

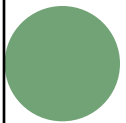


RESOLVED/DISPOSED CASES WITH ADVERSE DECISIONS TO RESPONDENT/S

Graph 1.8

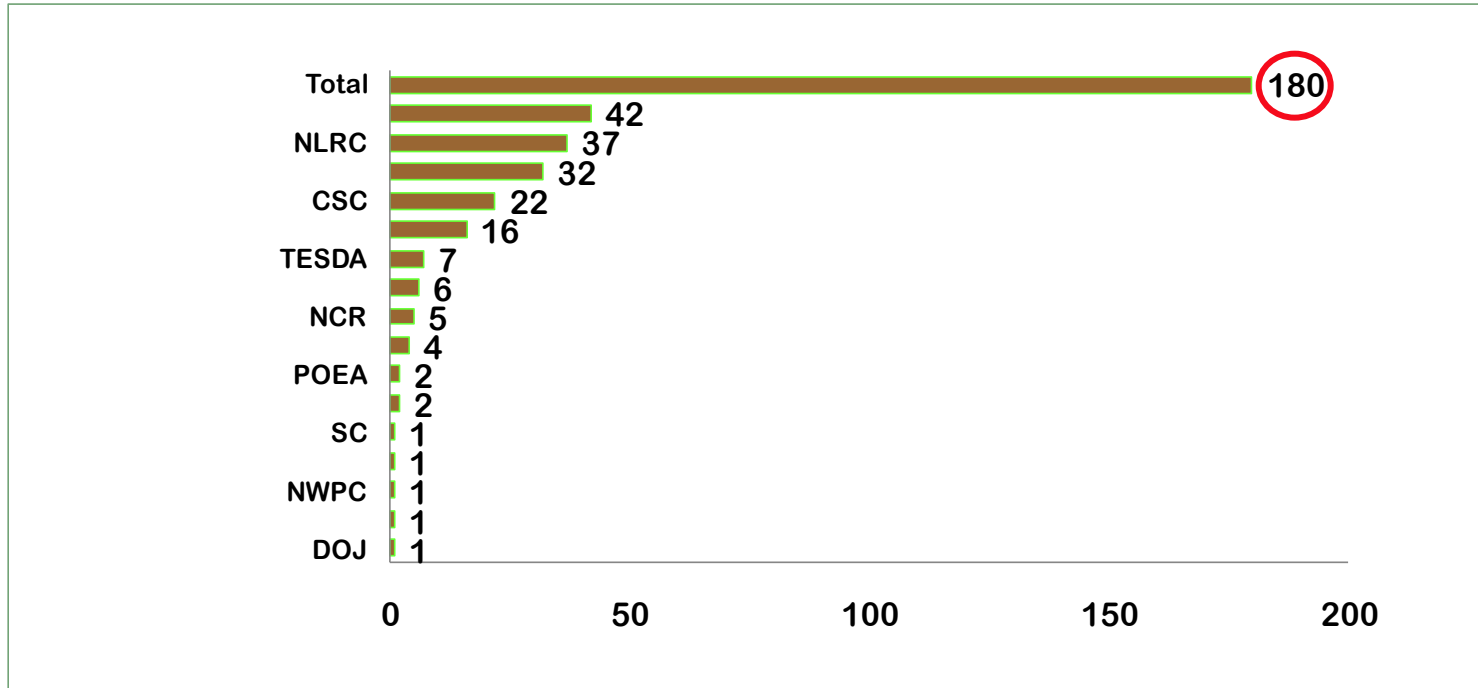


	3rd Level Position	Rank and File	Retired/Resigned/Deceased	Total
■ Suspension	6	35	1	42
■ Dismissal from Service	3	24	3	30
■ Reprimanded	0	12	0	12
■ Stern Warning	1	5	0	6
■ Admonition	0	3	1	4
■ Total	10	79	5	94



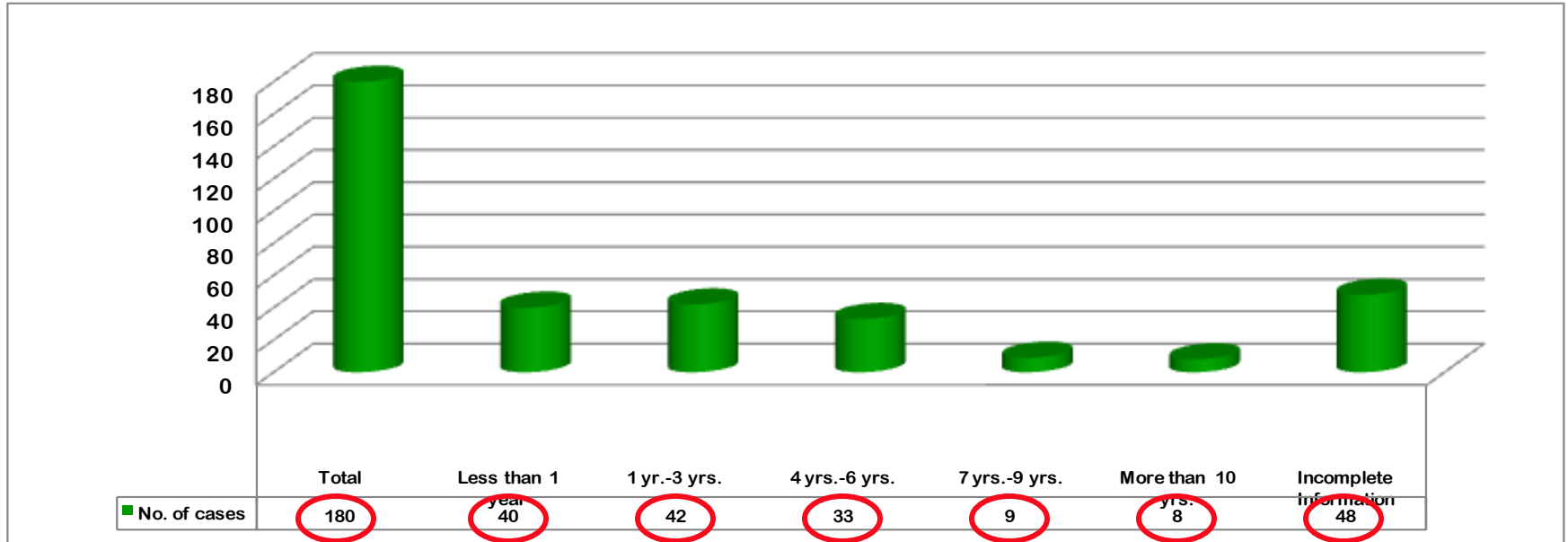
RESOLVED CASES BY OFFICES, ADMINISTRATIVE BODIES AND OTHER FORA

Graph 1.9



AGEING OF DECIDED/RESOLVED CASES

Graph 1.10



STATUS OF CASES HANDLED BY THE LEGAL SERVICE

Table 1.9

STATUS		NO. OF CASES
1. Pending Cases	7	
a.) under formal investigation	9	
b.) with draft resolution/decision	<u>3</u>	19
c.) with pending motion for reconsideration		
2. Indorsed to other offices		3
3. Decided Cases		32
a.) Efficiency related	10	
b.) Integrity related	18	
c.) Integrity-Graft related	<u>4</u>	
TOTAL		54

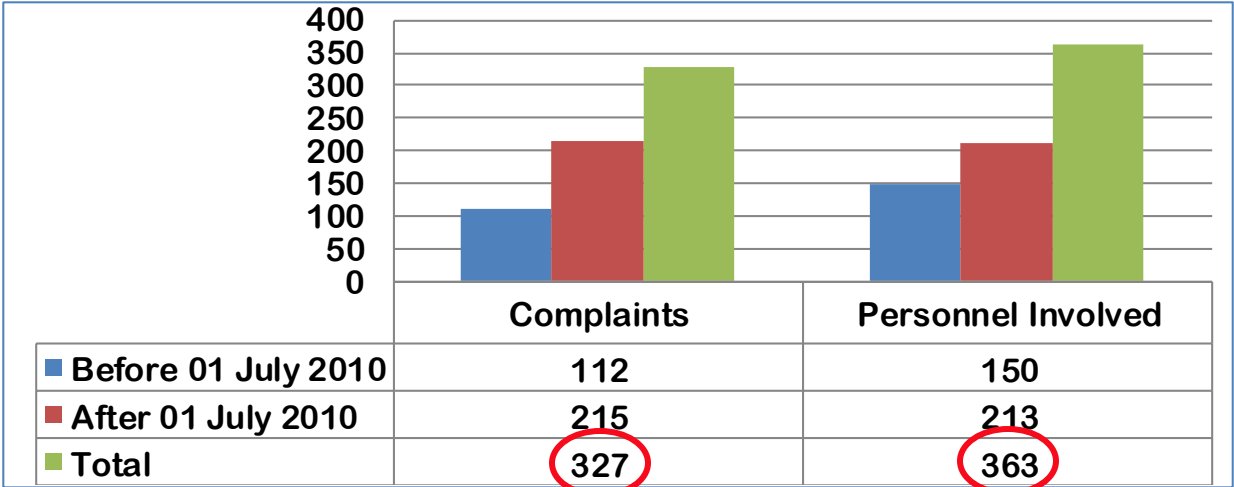


ADMINISTRATIVE COMPLAINT



TOTAL ADMINISTRATIVE COMPLAINTS AND PERSONNEL INVOLVED

Graph II-1



STATUS OF ADMINISTRATIVE COMPLAINTS AND PERSONNEL INVOLVED

Table II-1

STATUS OF COMPLAINTS	TOTAL COMPLAINTS	TOTAL PERSONNEL
1. For determination of prima facie evidence	144	142
2. For preliminary investigation	48	69
3. Indorsed	39	46
4. Resolved/Dismissed	96	106
Total	327	363



LODGING OF ADMINISTRATIVE COMPLAINTS

Table II-2

Administrative Body	Total
LEGAL SERVICE	89
DOLE-CO-ACC	50
DOLE-NCR	19
DOLE-RO2	1
DOLE-RO4A	2
DOLE-RO6	2
DOLE-RO7	5
NLRC	55
NWPC	1
OWWA	11
POEA	39
PRC	5
TESDA	42
CSC	1
OMB	1
OP	4
Total	327



COMPLAINTS LODGED WITH THE LEGAL SERVICE
Table III-2

STATUS OF COMPLAINTS	TOTAL
1. Under Preliminary Investigation	22
3. Indorsed	23
4. Resolved/Dismissed	44
TOTAL	89



**COMPLAINTS INDORSED BY THE LEGAL
SERVICE TO OTHER OFFICES,
ADMINISTRATIVE BODIES AND OTHER
FORA**

Table III-2.A

OFFICE/ADMINISTRATIVE BODY	NO. OF CASES
1. Office of the Ombudsman	13
2. Office of the Secretary	3
3. Overseas Workers Welfare Administration	2
4. ACC	1
5. Regional Office IV-A	2
5. POEA	1
6. TESDA	1
TOTAL	23



STATUS OF COMPLAINTS LODGED/INDORSED WITH ACC

Table IV

STATUS	NO. OF CASES	PERSONNEL INVOLVED
Preliminary Investigation	32	40
Indorsed:		
IAS	1	1
ILAB	2	2
OP	2	3
POLO-OWWA	1	1
POEA	1	1
NCR	3	2
RO1	1	0
RO6	1	3
R10	1	2
R12	<u>1</u> 14	<u>1</u> 16
Resolved/Decided	4	2
TOTAL	<u>50</u>	<u>58</u>

