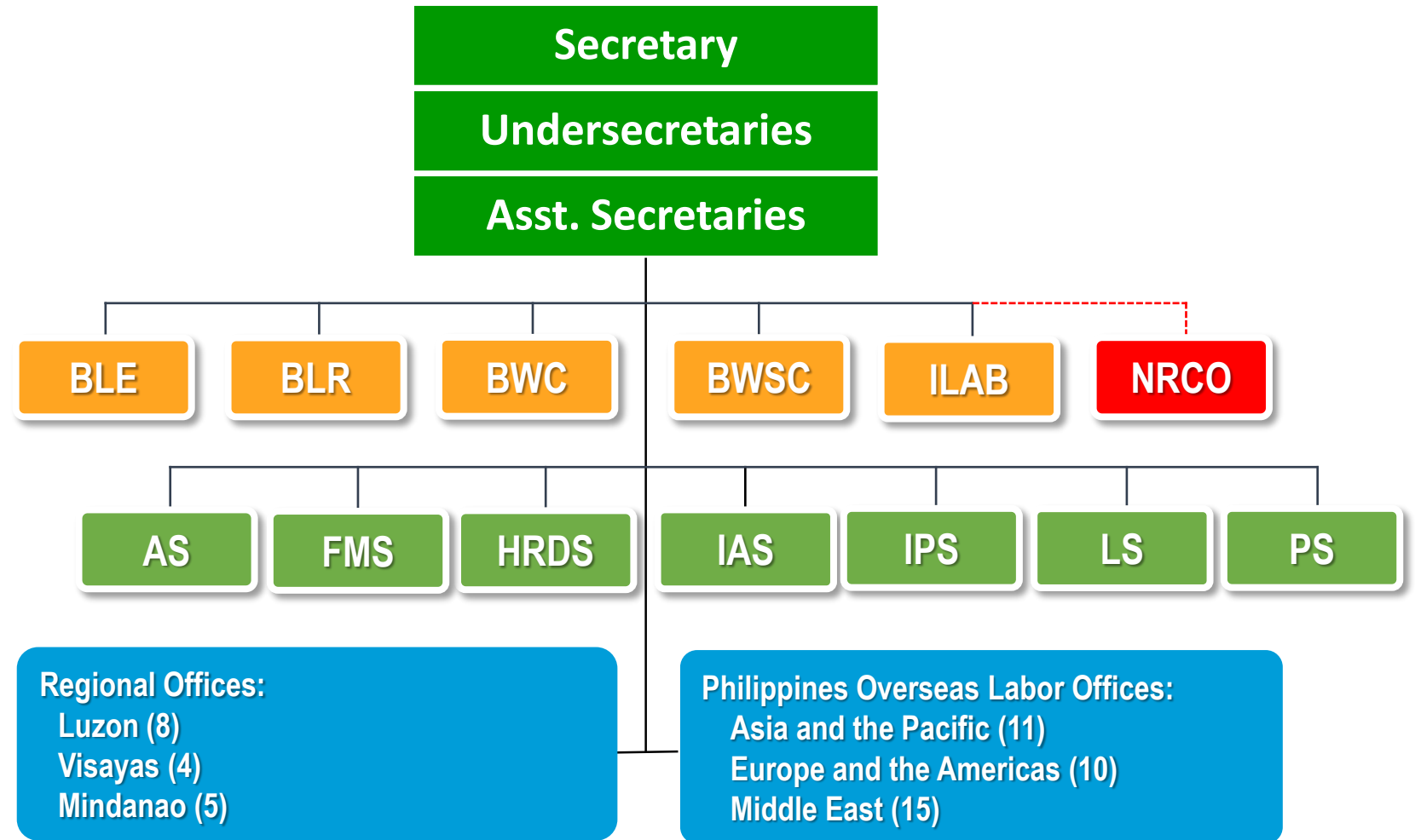


DOLE Organizational Structure

ATTACHED AGENCIES

1. Institute for Labor Studies
2. National Conciliation and Mediation Board
3. National Labor Relations Commission
4. National Maritime Polytechnic
5. National Wages and Productivity Commission
6. Overseas Workers Welfare Administration
7. Philippine Overseas Employment Administration
8. Professional Regulation Commission
9. Employees Compensation Commission
10. Occupational Safety and Health Center



Bureau
 OSEC Service Unit

NRCO is transferred as an attached office of OWWA thru Republic Act 10801 (s.2016).

Bureaus

BLE	Bureau of Local Employment
BLR	Bureau of Labor Relations
BWC	Bureau of Working Conditions
BWSC	Bureau of Workers with Special Concerns
ILAB	International Labor Affairs Bureau
NRCO	National Reintegration Center for OFWs

OSEC Services

AS	Administrative Service
FMS	Financial and Management Service
HRDS	Human Resource Development Service
IAS	Internal Audit Service
IPS	Information and Publication Service
LS	Legal Service
PS	Planning Service

Technical Education and Skills Development Authority (TESDA)

* By virtue of Executive Order No. 1 (s.2016), the TESDA is transferred under the supervision of the Office of the Cabinet Secretary.